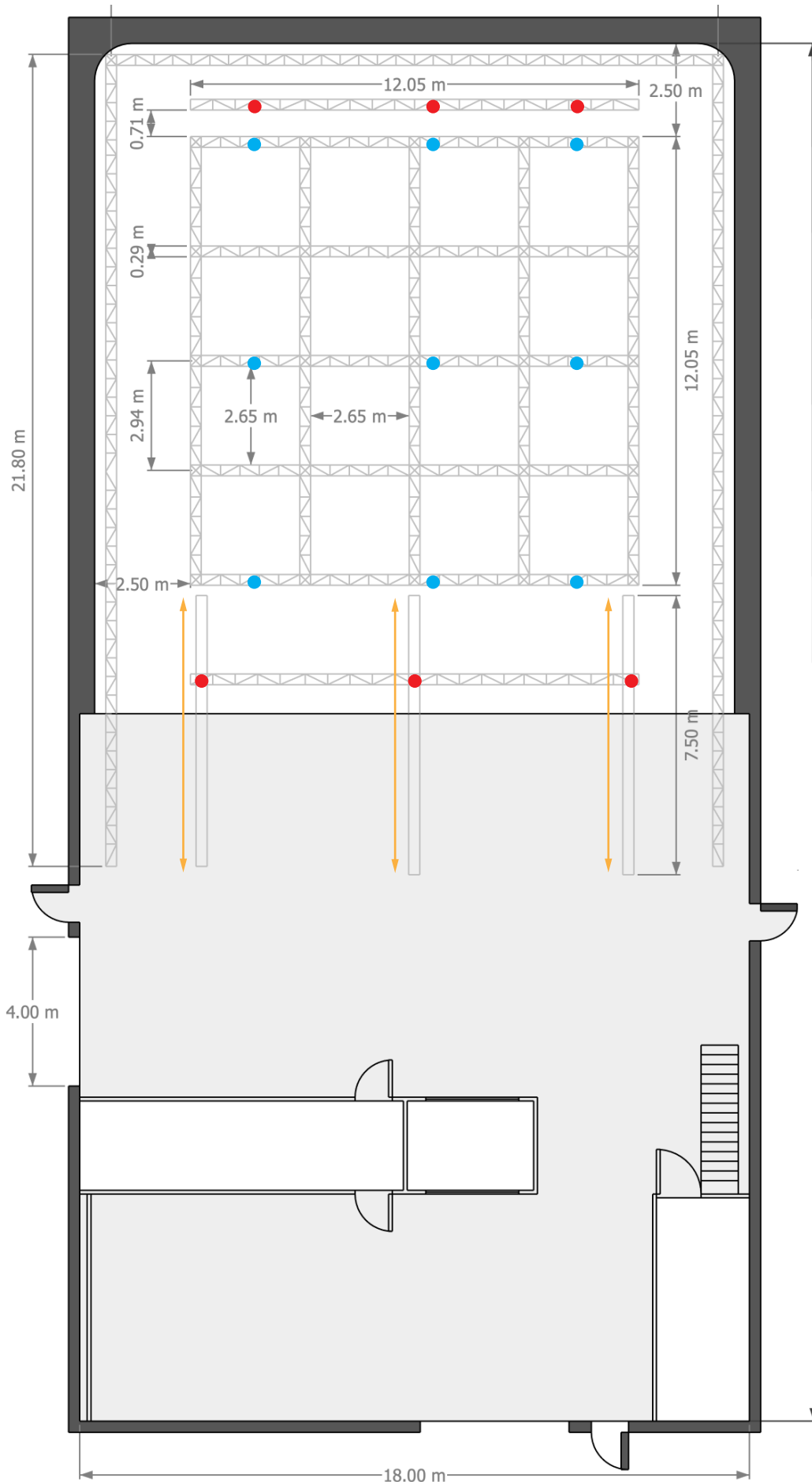


MAMMOTH.

RIGGING FLOOR PLAN

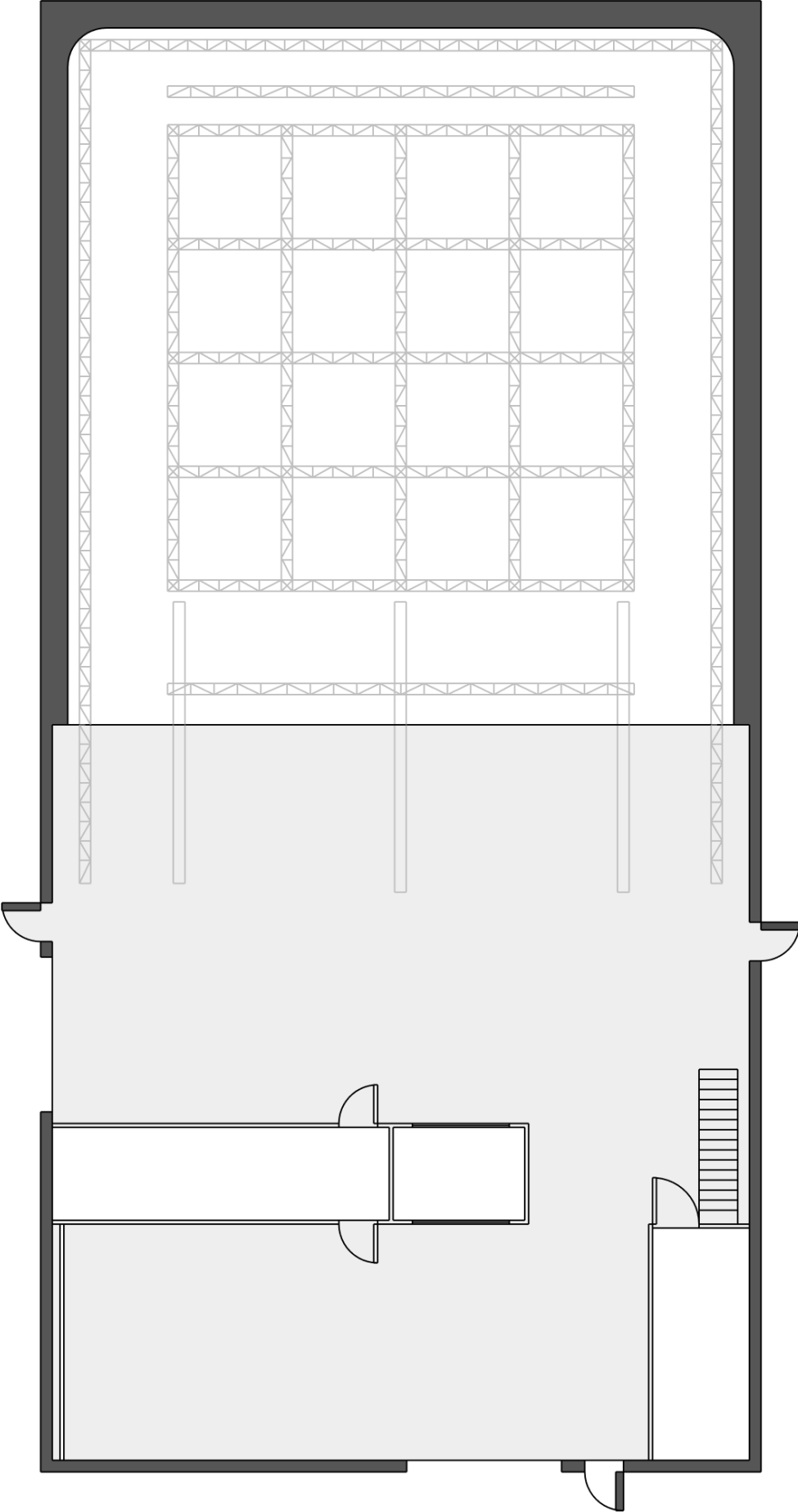


UDL net weight 1 tonne SWL
 Box truss - Milos M290 HD Quatro
 Tri truss (Perimeter only) - Milos M290 HD Trio

● 0.5 tonne Lodestar CM hoist
 ● 1 tonne Lodestar CM hoist
 → 7.5m trolley system

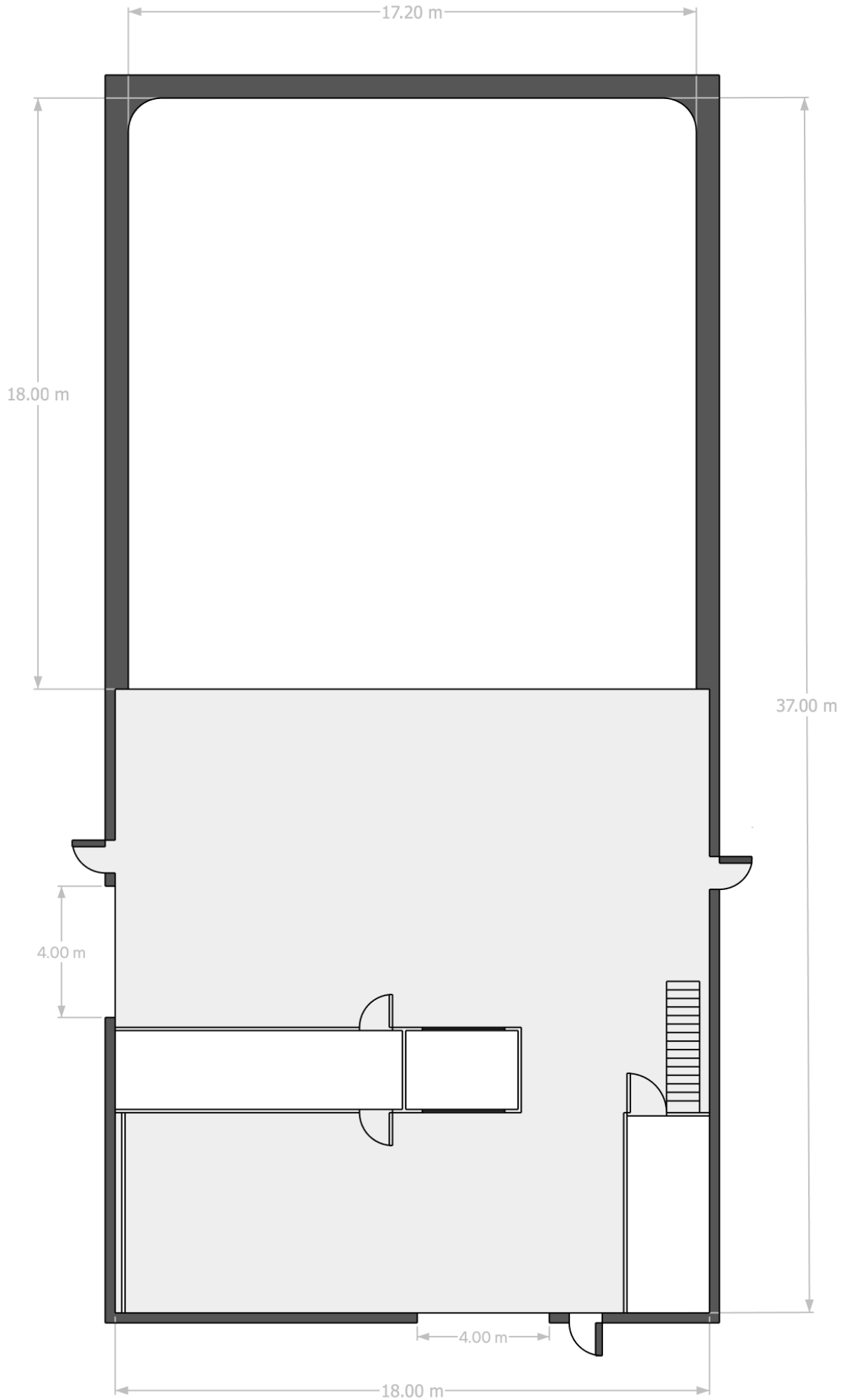
MAMMOTH.

RIGGING FLOOR PLAN - NO MEASUREMENTS

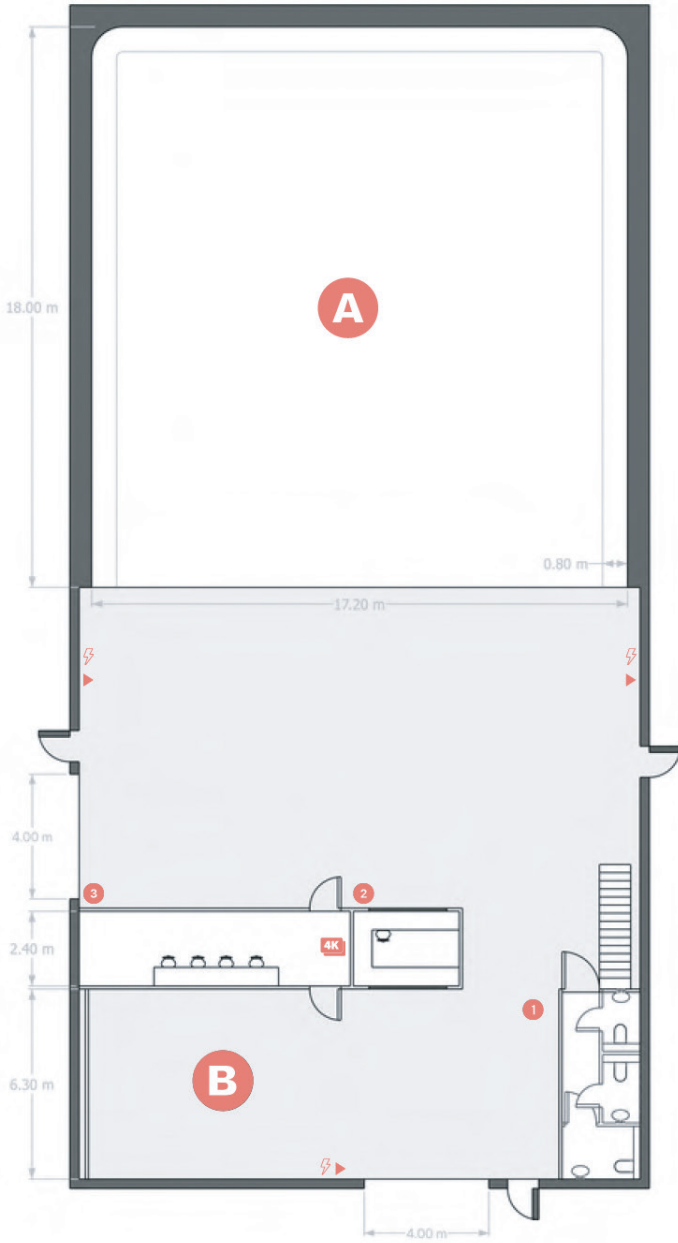


MAMMOTH.

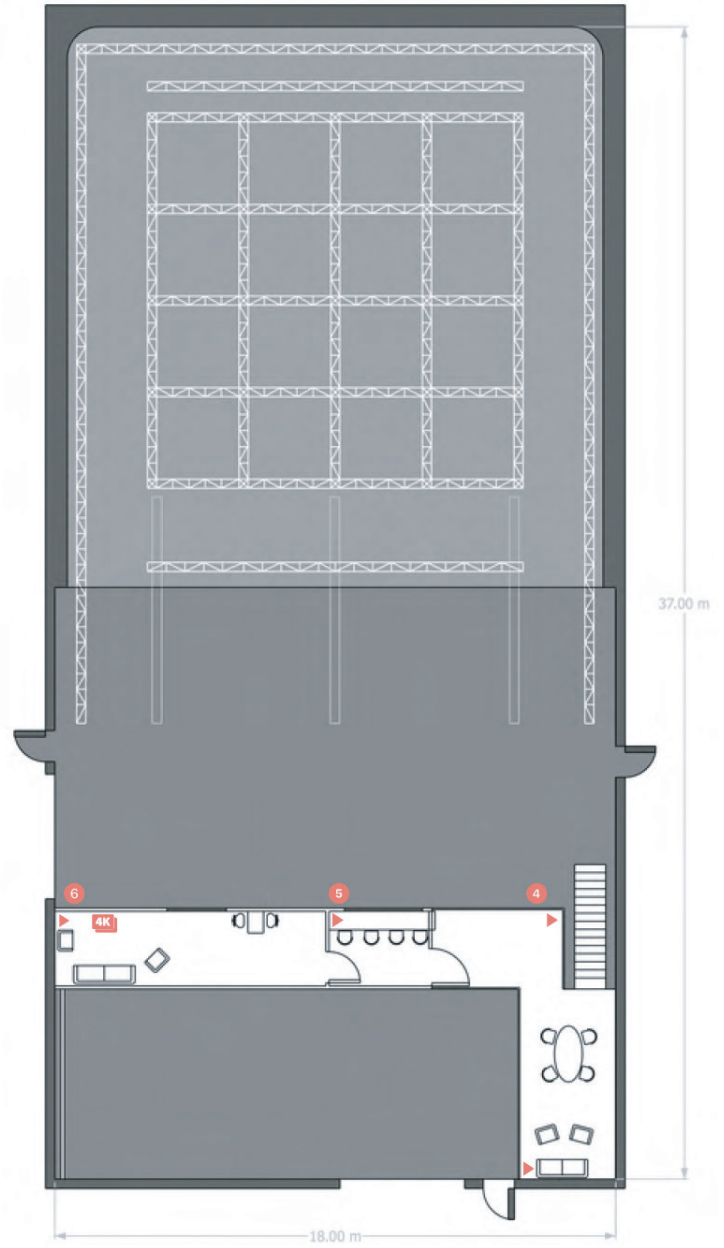
BASIC FLOOR PLAN



Ground Floor



First Floor



Key

- A** Stage A: White Infinity Cove
- B** Stage B: Concrete Photo Area

- 4K** 55" 4K Ultra HD Monitor
- ▶ Wall Box - SDI | Ethernet | LAN
- ⚡ Electric Distribution

Rooms

- 1** Toilet
- 2** Reception
- 3** Styling Room
- 4** Balcony
- 5** Production Office
- 6** Green Room